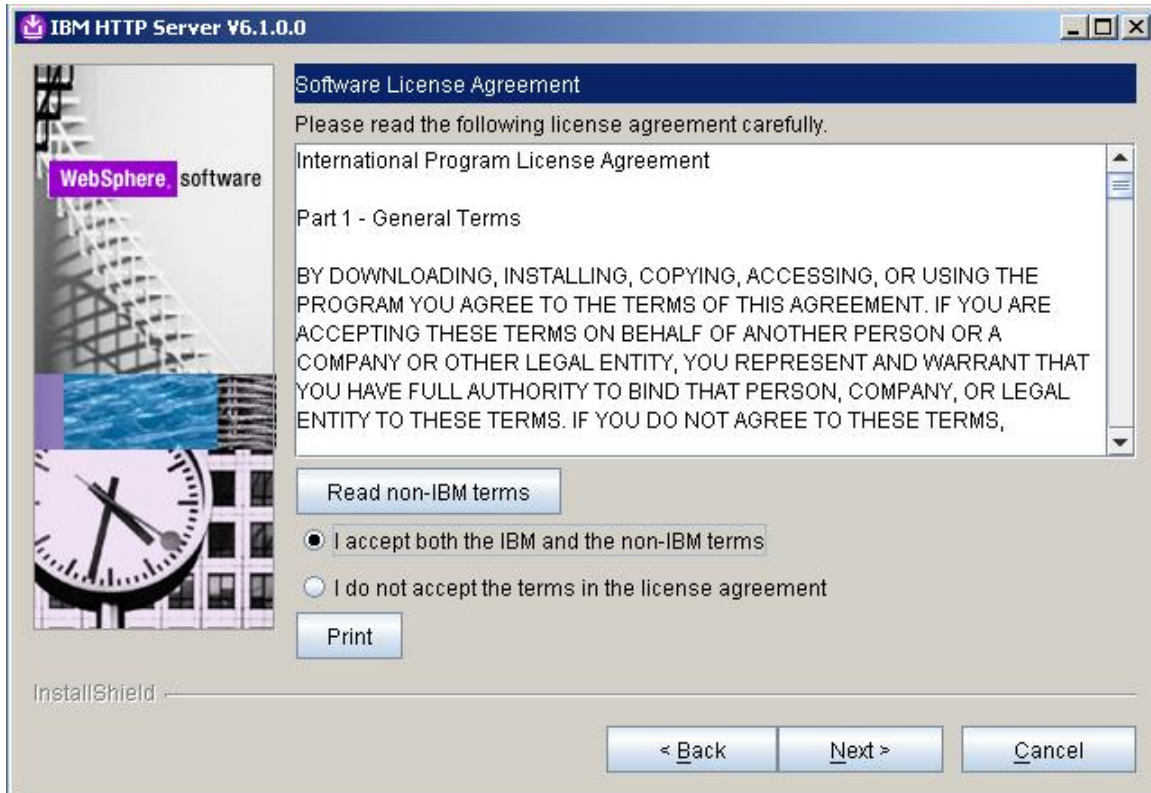


Follow the steps below to install and add IBM HTTP Server 6.1 to WebSphere Application Server

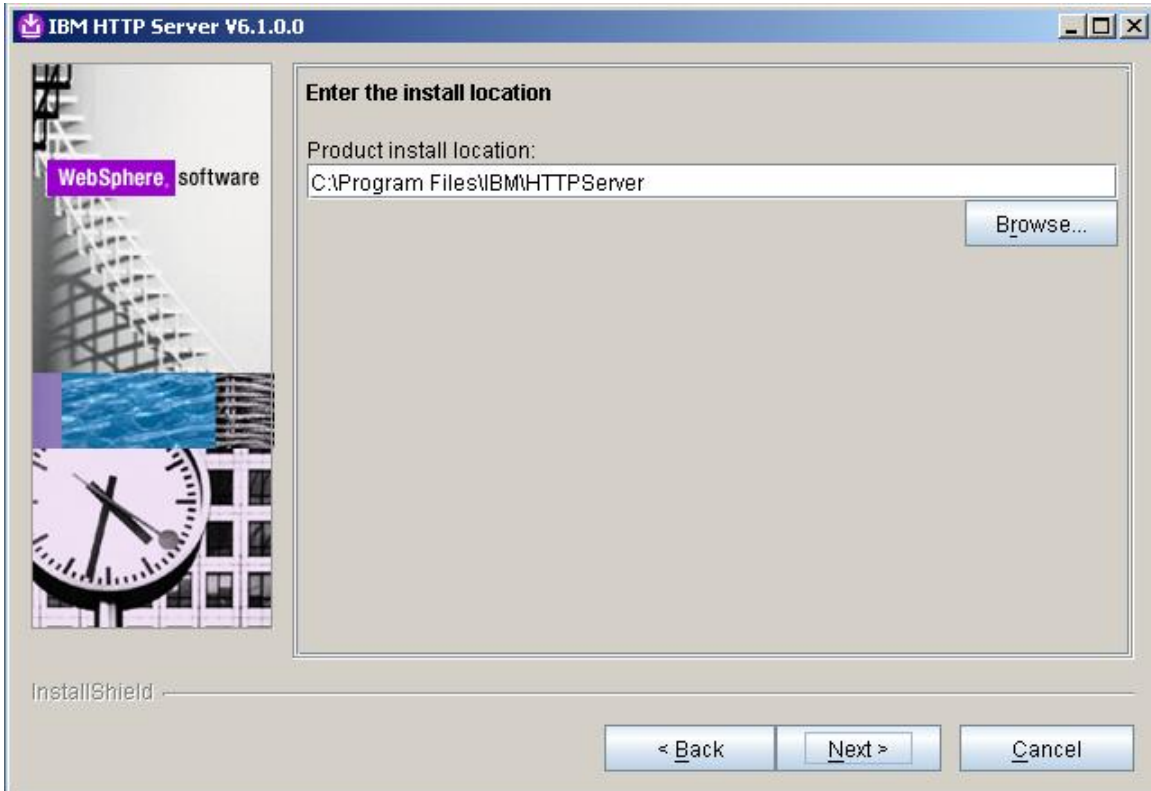
1) Run install.exe from installation directory. Welcome window will appear click Next



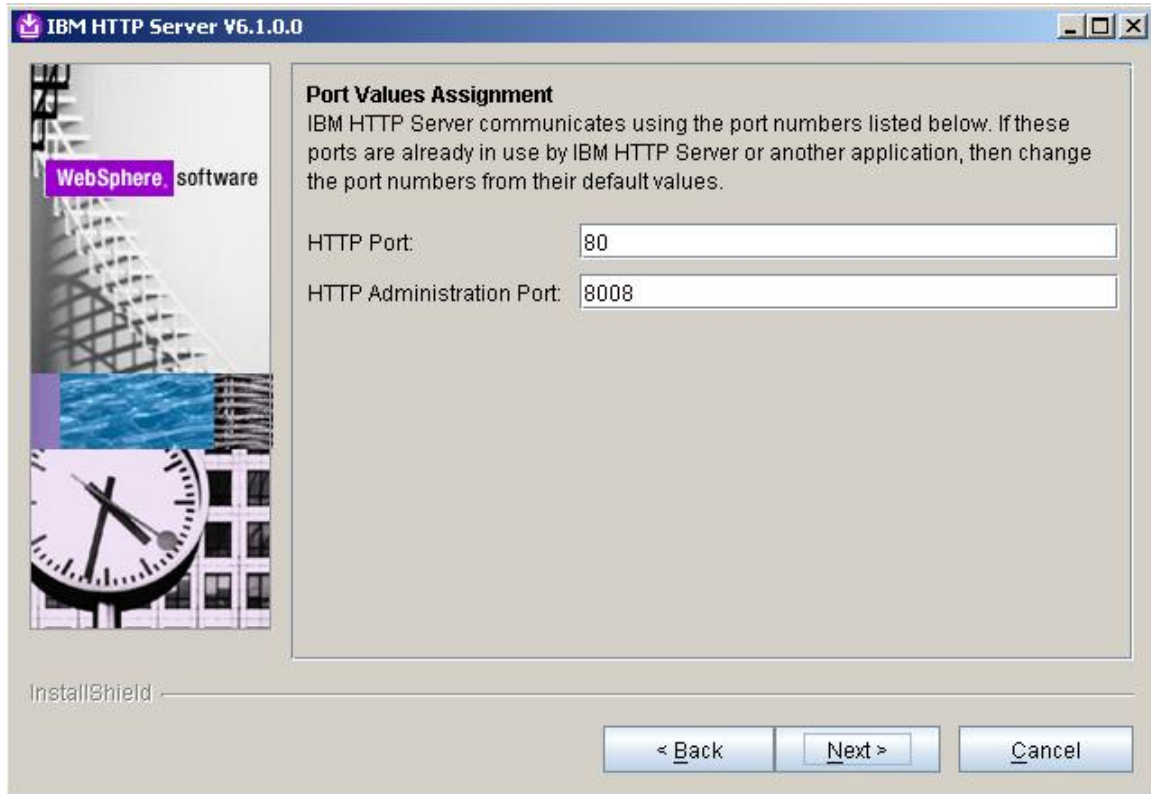
- 2) Software License Agreement will appear select "I accept both the IBM and the non-IBM terms"



2) Enter the location where you want to install IBM HTTP Server and click next



3) Enter HTTP Port 80 and HTTP Administration Port 8008 and click next



The screenshot shows a Windows-style dialog box titled "IBM HTTP Server V6.1.0.0". On the left side, there is a vertical banner with the "WebSphere software" logo and a collage of images including a modern building, a clock, and a globe. The main area of the dialog is titled "Port Values Assignment" and contains the following text: "IBM HTTP Server communicates using the port numbers listed below. If these ports are already in use by IBM HTTP Server or another application, then change the port numbers from their default values." Below this text are two input fields: "HTTP Port:" with the value "80" and "HTTP Administration Port:" with the value "8008". At the bottom of the dialog, there are three buttons: "< Back", "Next >", and "Cancel". The "InstallShield" logo is visible in the bottom left corner of the dialog's frame.

- 4) Select the check boxes “Run IBM HTTP Server as a Windows Service” and “Run IBM HTTP Administration as a Windows Service” and also select the radio button “Log on as a local system account”



- 4) In the HTTP Administration Server Authentication window select the checkbox and fill up User ID and password fields. Click Next

IBM HTTP Server V6.1.0.0

WebSphere software

HTTP Administration Server Authentication

Create a user ID and password to authenticate to the IBM HTTP administration server using the WebSphere Application Server administrative console. The newly-created user ID and password is encrypted and stored in the conf/admin.passwd file. You can create additional user IDs after the installation by using the htpasswd utility.

Create a user ID for IBM HTTP administration server authentication

User ID:
ihsadmin

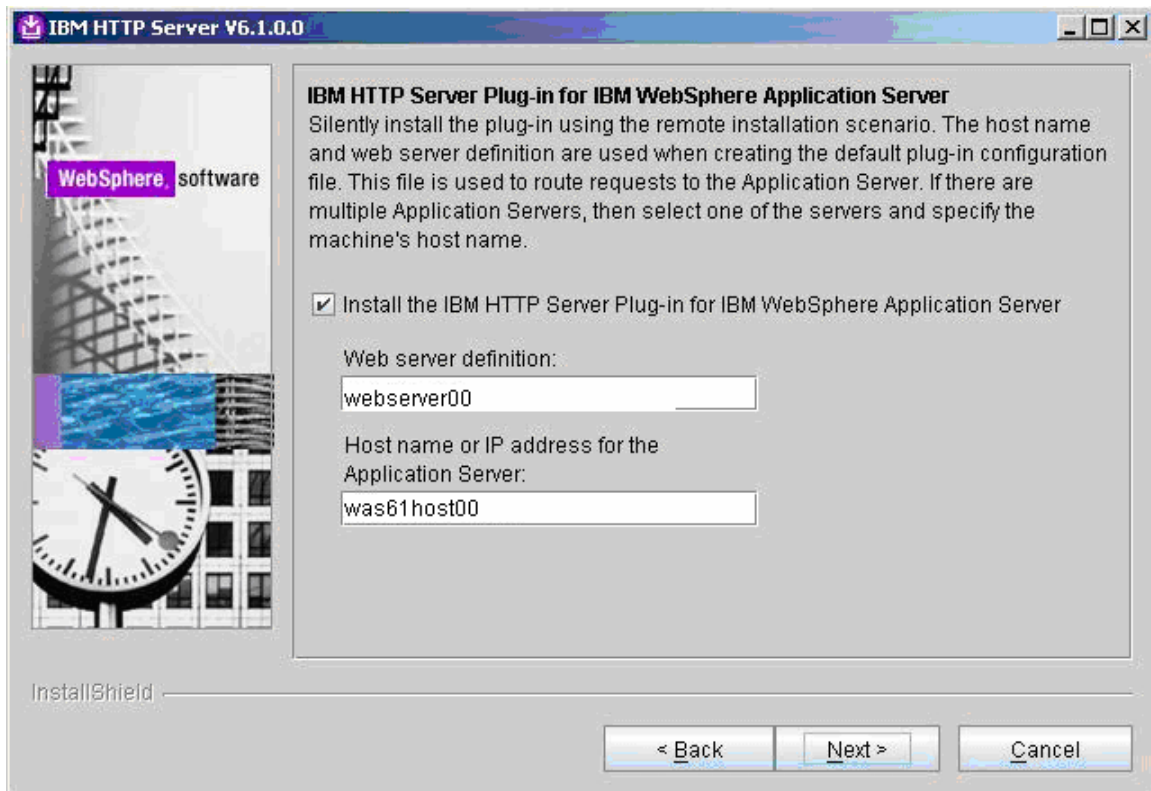
Password:

Confirm Password:

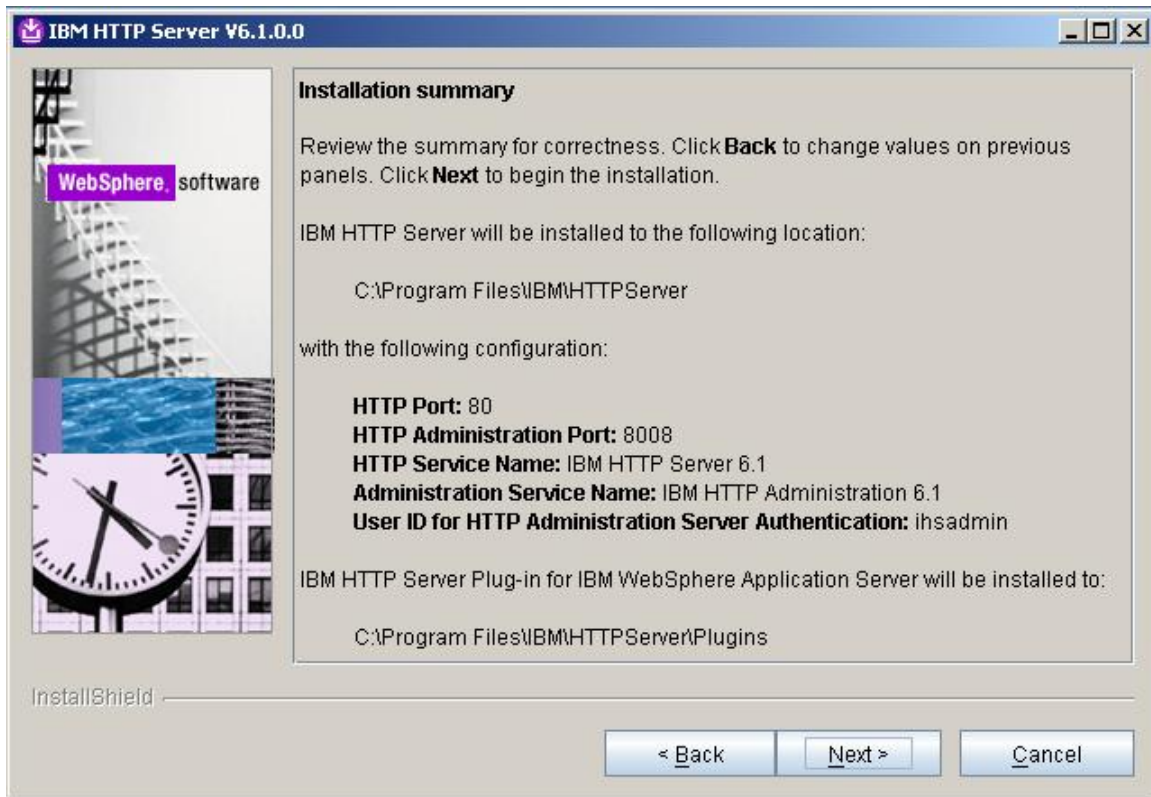
InstallShield

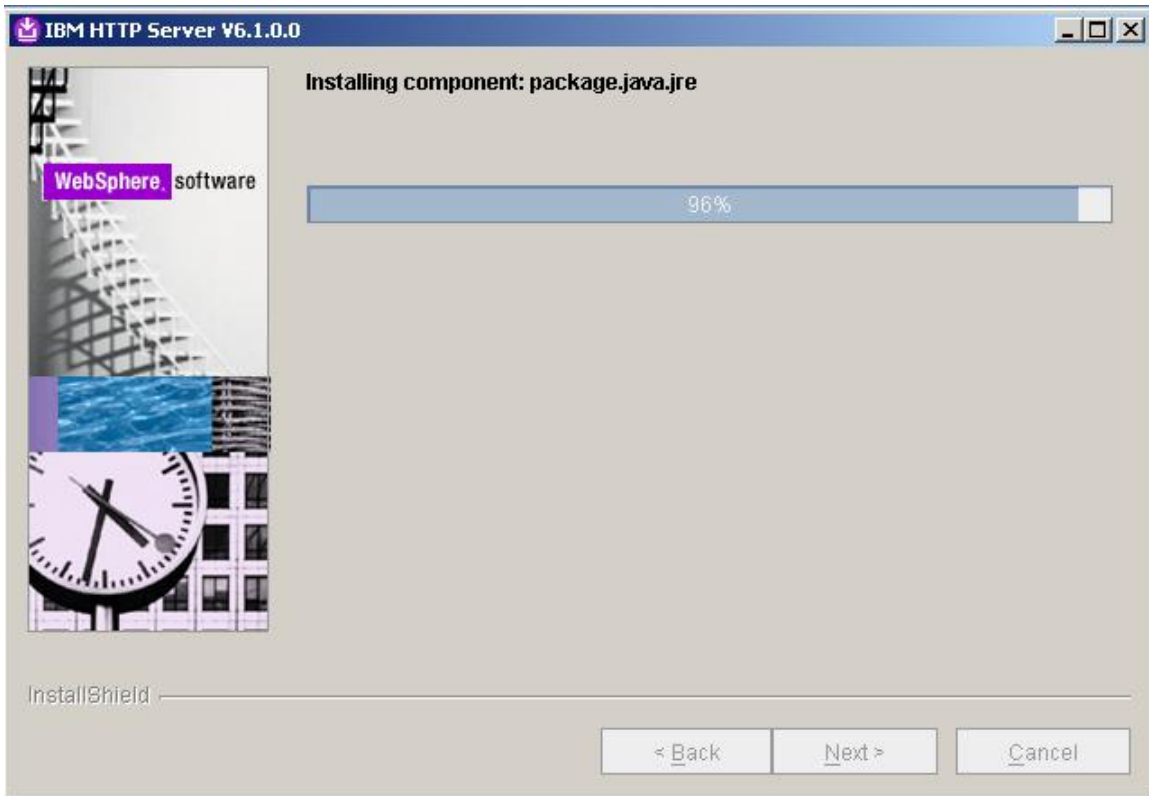
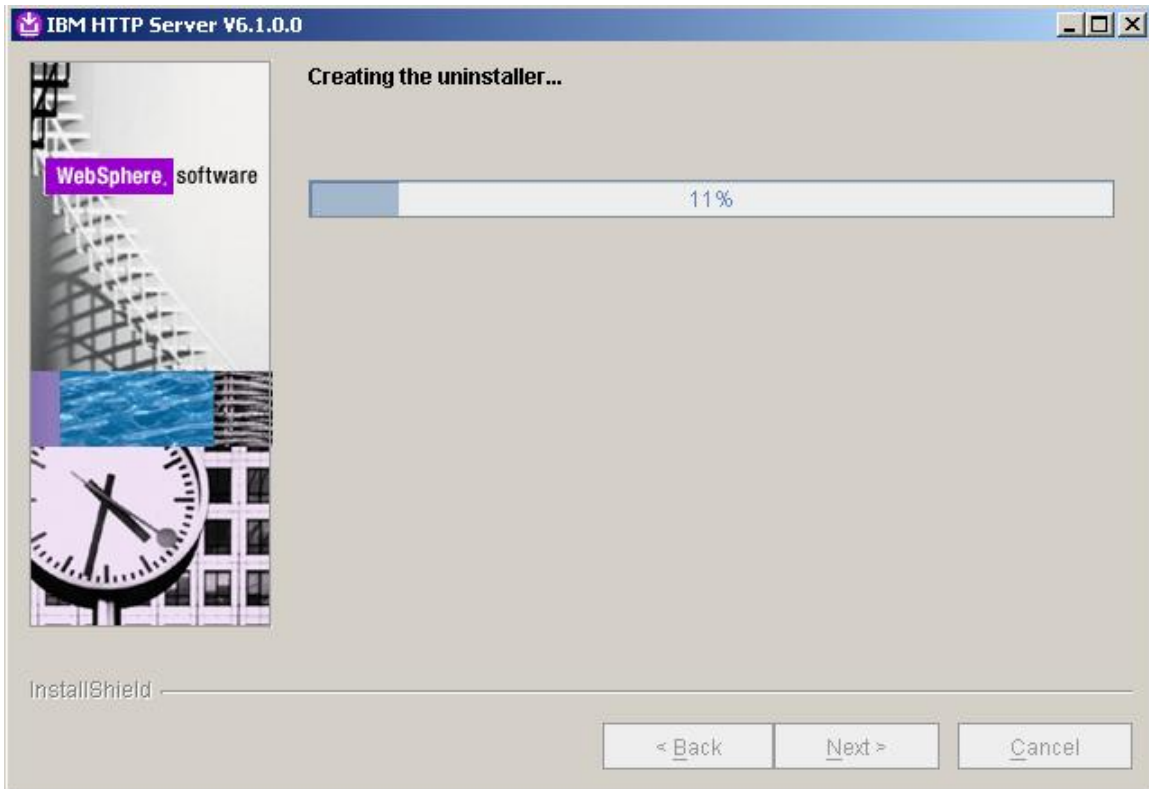
< Back Next > Cancel

- 5) Select the check box to install HTTP Server plug-in and specify the webserver name and host name of application server

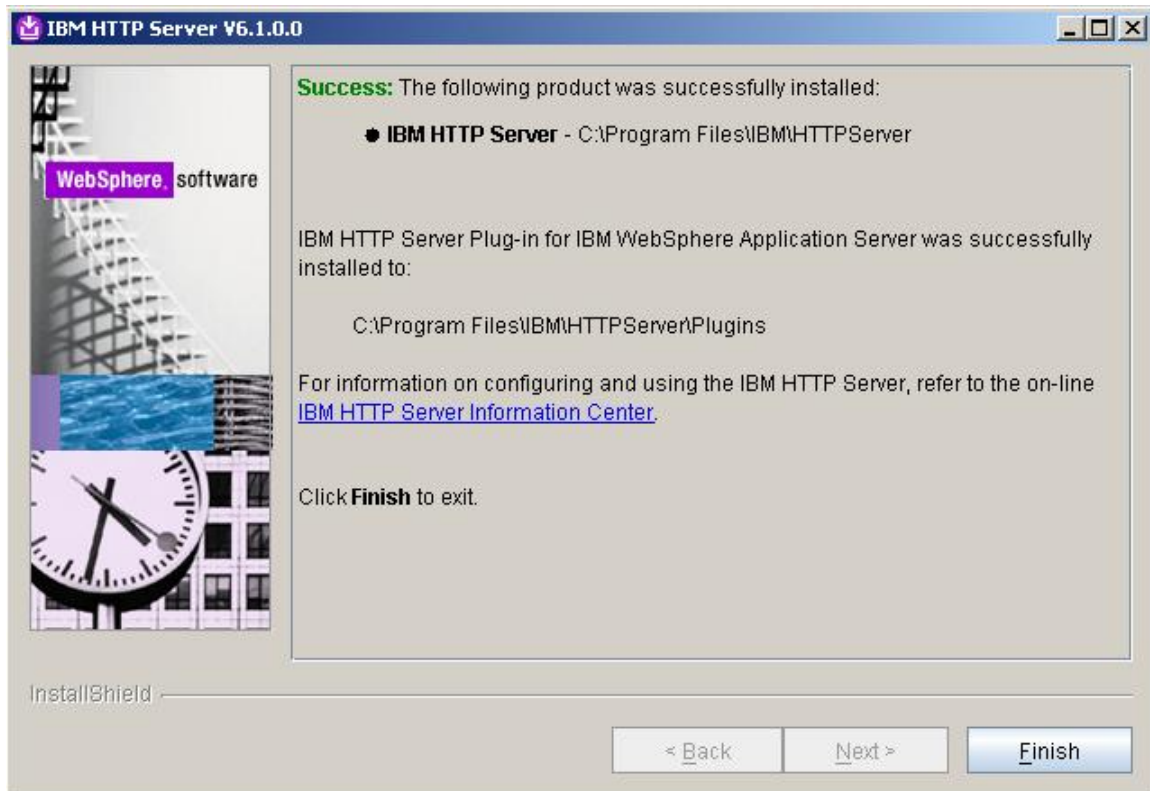


6) Following window will show you installation summary before installation begins Click next to install product.





- 7) After the Installation completes following window will appear and shows successful installation message



IBM HTTP Server has been successfully installed and we shall now follow the steps below to add the IBM HTTP Server to existing cell.

- 1) Launch the administrative console.
 - a) Enter User Id and Password and Login
- 2) Create a new unmanaged node for the Web server.
 - a) In the navigation tree, expand System administration and click Nodes.
 - b) Click the Add Node button.
 - c) In the Add Node window select Unmanaged node and click Next

Add Node

Use this page to add either a managed or an unmanaged node.

Managed node

Specifies the creation of a managed node. A managed node contains an application server process that runs within the deployment manager cell. The managed node is associated with a node agent process that maintains the configuration for the node and controls its operation. Choosing this option results in running the add node utility to federate an existing standalone application server.

Unmanaged node

Specifies the creation of an unmanaged node. An unmanaged node represents a node in the topology that does not have an application server process or a node agent process. Unmanaged nodes are for other server processes, such as Web servers that exist on their own node in the topology.

Next

Cancel

- 3) In the Nodes window specify configuration information for the node. Specify the name ihsnode and Host Name where you creating Node. The Platform Type is Windows. Click OK.

Nodes ? -

Nodes > New

Use this page to view or change the configuration for an unmanaged node. An unmanaged node is a node defined in the cell topology that does not have a node agent running to manage the process. Unmanaged nodes are typically used to manage Web servers.

Configuration

General Properties

* Name
ihsnode

* Host Name
was61host00

* Platform Type
Windows ▾

The additional properties will not be available until the general properties for this item are applied or saved.

Additional Properties

■ Custom Properties

Apply OK Reset Cancel

4) Save the changes. The node `ihsnode` should be added to the list of nodes

Select	Name	Version	Discovery Protocol	Status
<input type="checkbox"/>	<u>ihsnode</u>	Not applicable	TCP	⊗
<input type="checkbox"/>	<u>was61host00CellManager01</u>	ND 6.1.0.0	TCP	↔
<input type="checkbox"/>	<u>was61host00Node01</u>	ND 6.1.0.0	TCP	↔
<input type="checkbox"/>	<u>was61host00Node02</u>	ND 6.1.0.0	TCP	↔

Total 4

Node has been created now add the Web server to the configuration
In this step the Web server definition will be added to the `ihsnode`.

- 5) Add the Web server to the `ihsnode` configuration.
- In the administrative console select Servers —> Web servers.
 - Click New to add a Web server.
 - On Step 1 of creating a new Web server entry select the node `ihsnode` from the drop-down menu. Specify the server name of `webserver00`.

Click next

Create new Web server definition

Use this page to create a new Web server.

→ **Step 1: Select a node for the Web server and select the Web server type**

Step 2: Select a Web server template

Step 3: Enter the properties for the new Web server

Step 4: Confirm new Web server

Select a node for the Web server and select the Web server type

Select a node that corresponds to the Web server you want to add.

Select node

* Server name

* Type

- 6) Specify the Web server template. Ensure that IHS is selected and click Next

Create new Web server definition

Use this page to create a new Web server.

Step 1: Select a node for the Web server and select the Web server type

→ Step 2: Select a Web server template

Step 3: Enter the properties for the new Web server

Step 4: Confirm new Web server

Select a Web server template

Select the template that corresponds to the server that you want to create.

Select	Template Name	Type	Description
<input checked="" type="radio"/>	IHS	System	The IHS Web Server Template

- 7) Specify the properties for the new Web server. Enter the following information in the fields as provided

Field Name	Value
Port	80
Installation location	<ihs_root>
Service name	IBMHTTPServer6.1
Plug-in installation location	<plugin_root>
Application mapping All	Port 8008
Username	ihsadmin
Password	was1edu

8) Click Next

Create new Web server definition

Use this page to create a new Web server.

Step 1: Select a node for the Web server and select the Web server type

Step 2: Select a Web server template

→ **Step 3: Enter the properties for the new Web server**

Step 4: Confirm new Web server

Enter the properties for the new Web server

Enter the Web server properties.

* Port
80

Web server installation location
C:\Program Files\IBM\HTTPServer

* Service name
IBMHTTPServer6.1

* Plug-in installation location
c:\Program Files\IBM\HTTPServer\Plugin

Application mapping to the Web server
All

Enter the IBM Administration Server properties.

* Port
8008

* Username
ihsadmin

* Password

* Confirm password

Use SSL

Previous **Next** Cancel

9) On the confirmation window click finish and save the changes.

